

West Grey Police Service



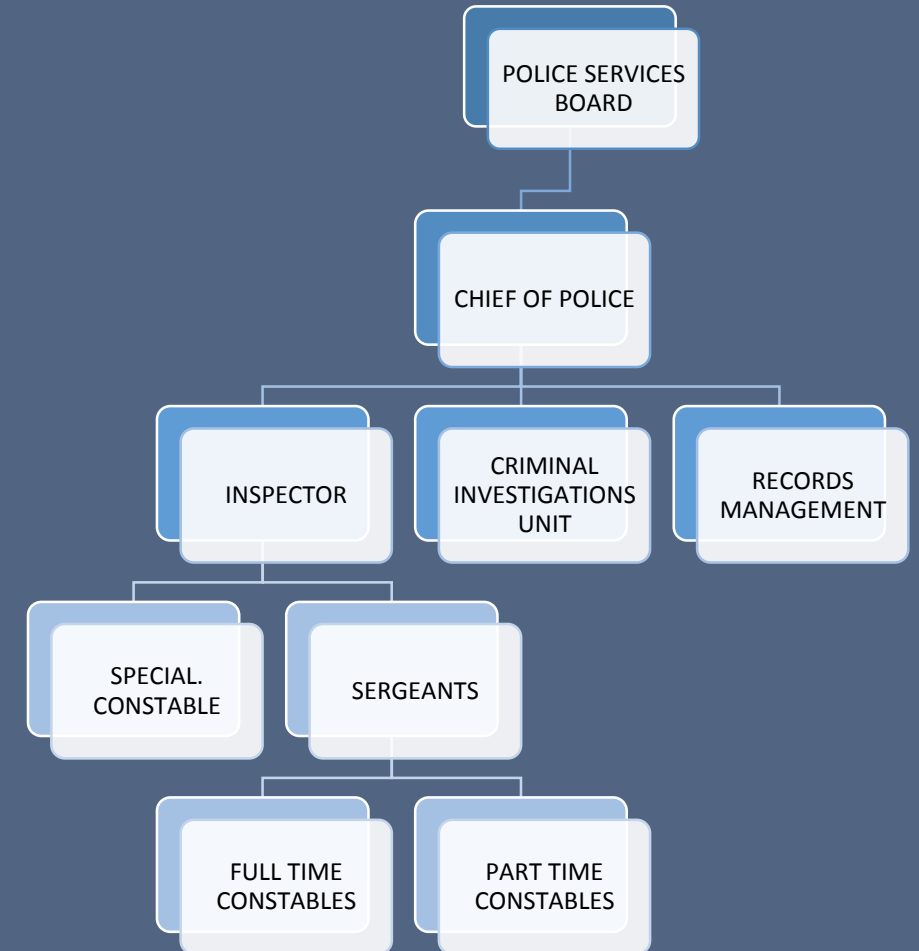
Organizational Chart

Mission Statement

The West Grey Police Service will endeavour to create a safe environment in which to live, work and play.

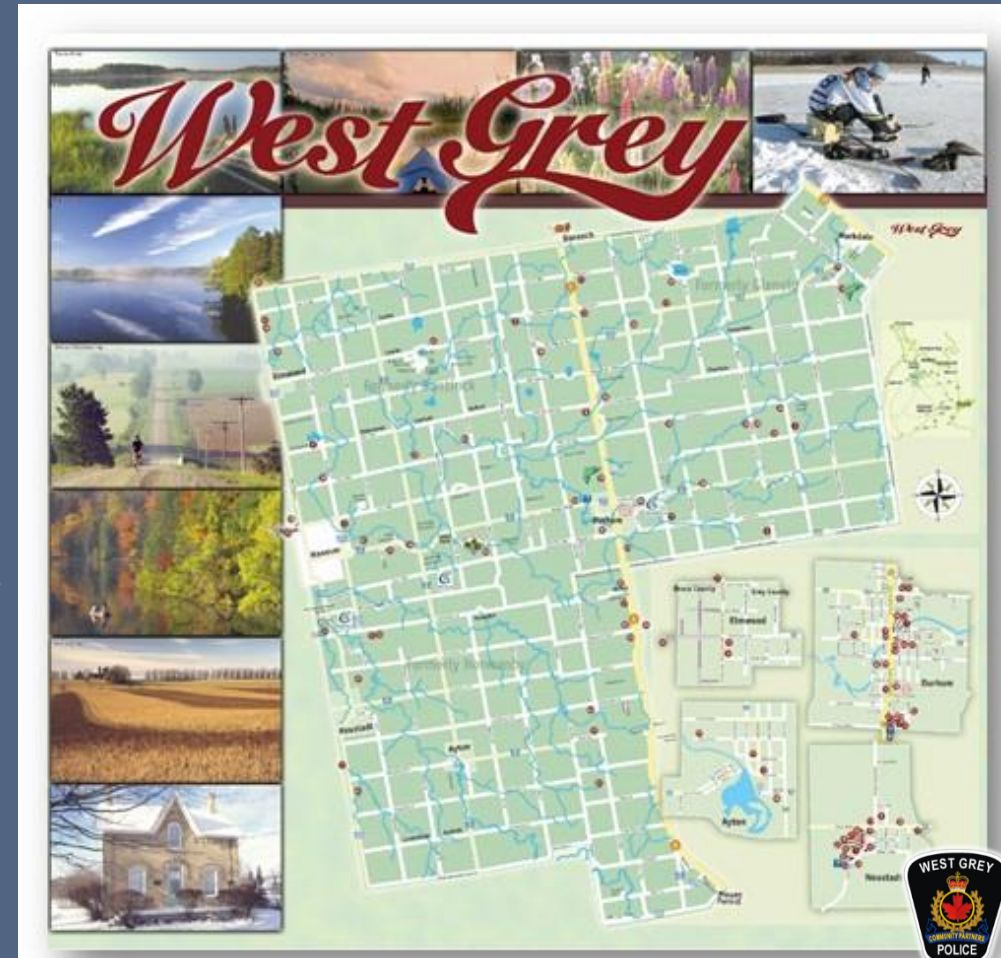
Vision Statement

Members of the West Grey Police Service are committed to working with the citizens of the Municipality of West Grey to understand their policing needs, enforce laws, and develop proactive solutions that will improve the service we provide and continue to be one of the best Community Oriented Police Services in the Province of Ontario.



The West Grey Police Service polices the largest geographical portion of Grey County

- Over 875 km² of land and water patrolled
- Over 780 km of roadways patrolled
- 1 centrally located police station
(Former Town of Durham)
- 1 satellite office
(Former Village of Ayton)
- 3 townships amalgamated into one municipality
- Population of 13,518



Community Partners

2022 in Numbers

- 5139 Calls for service
- 374 Criminal charges laid
- 770.25 Hours of foot patrol in our Municipality
- 335 Motor vehicle collisions investigated
- 1097 Provincial Offence Notices issued



Community Partners

Our members are trained and ready to serve in a multitude of specialty fields including:

Qualified Breath Technicians

Anti-Terrorism

Standard Field Sobriety Officers

Technical Traffic Investigators

Off-road Trail System Team

Mobile Surveillance

Hate Crime Investigator

Search and Rescue

Training Unit

Major Case Management

Sexual Assault Unit

DNA Sampling and Collection

Domestic Violence Unit

Surveillance (Electronic & Physical)

Criminal Investigation Bureau

Violent Crime Linkage Analysis

Elder Abuse Investigators List

Sex Offender Registry

Media Relations

Child Sexual Exploitation

Intelligence

Community Partners



Continued from previous slide;

Homicide Investigators

Scenes of Crime Officers

Arson Investigator

Commercial Vehicle Inspectors

Death Investigators

Drug Investigators

Human Trafficking Investigator

In School K.I.D.S (Knowledge, Issues,
Decisions and Supports) program
offered to all schools

Fraud Investigators

Crisis Negotiators

Powercase Management

Firearms Verification Officer

Hate Crimes Investigator

Domestic Violence Coordinators

Community Partners



West Grey Police Service

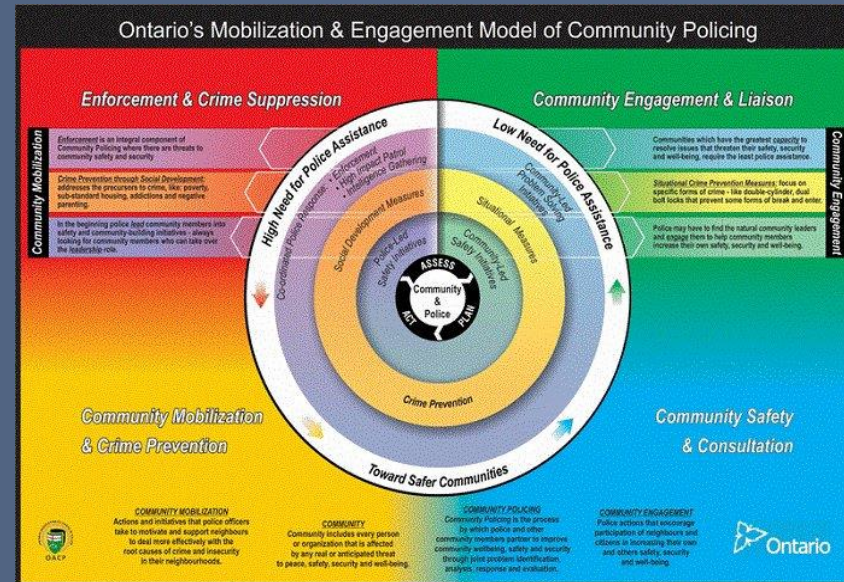
West Grey Police Service have four organizational pillars;

- 1. Community**
- 2. Superior Quality Service**
- 3. Employee Wellness**
- 4. Continuous Service Improvement**

Community



Community Policing



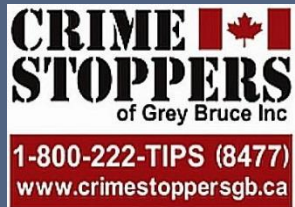
The West Grey Police Service is committed to Community Policing and solving community issues through a collaborative approach with our community networks. Community Policing is a fundamental principle under which **all** of our services are delivered. Ontario's Mobilization and Engagement Model of Community Policing forms part of all business planning.

Community Partners



Community Programs Available

- Auxiliary Program
- Community presentations on drugs, internet safety, bullying, driving, elder abuse prevention, frauds
- Crime Stoppers
- Project Lifesaver
- Vulnerable Person Registry
- Grey Bruce Leadership Table
- Medical Alert Registry
- Victim Services Grey Bruce Perth (Board Membership)
- R.I.D.E. Programs year round



Community Partners

A police officer in a dark uniform with "POLICE" on his vest and a West Grey Police patch on his shoulder is smiling and holding a small brochure. He stands next to a large vertical poster. The poster features the West Grey Police logo and the MedicAlert Foundation Canada logo at the top. The main text on the poster reads "MedicAlert Connect Protect" in large red letters, followed by "A partnership to protect our most vulnerable." Below this is a red banner with the text "SIGN UP TODAY. 1.866.696.0273 medicalert.ca/ConnectProtect". The bottom half of the poster shows three photographs: an elderly woman hugging a younger woman, a young man looking thoughtful, and a woman and a child looking at a document together. A West Grey Police logo is also visible in the bottom right corner of the poster.

Community Programs Available



- Grey Bruce County Situational Table
- Opioid Working Group of Grey Bruce
- Lock It or Lose It
- M.M.H.A.R.T.
- S.T.A.R.

- CPTED (Crime Prevention Through Environmental Design)
- Bicycle Serial Number Registry
- ATV / Snowmobile Patrols - partnerships with local trail wardens
- Stop, Walk and Check Program



Community Partners



Annual Community Events

- Polar Plunge for Special Olympics Ontario
- West Grey Police Toy Drive – Thousands of dollars raised each year to buy toys for children during the holidays, in 2022 the community supported 248 families.
- Torch Run for Special Olympics Ontario
- Touch a Truck – In partnership with the West Grey Library
- Pulling Together (Hospital Firetruck Pull) – WGPS has participated since inception of event to raise funds for our local community hospital.
- Trek for Tourette's
- West Grey Loves Canada Day
- Presentations at local schools – Various award ceremonies and graduations
- Cops for Cancer - Local elementary school students get to shave officers heads to raise money for cancer research
- Air Cadets of Canada – Continued partnership, honoured guests and speakers during ceremonial events
- Agricultural Fairs – Annual participation and information booth

Community Partners



Youth Programs

- **KIDS program**

(Knowledge, Issues, Decisions and Supports)

- **Co-op Student program**

- **Youth in Policing Initiative**

- **Positive Ticketing**

- **School Resource Officer Mentorship**

- **Ongoing school presentations**

(Internet Safety, Drug and Alcohol awareness, Cyberbullying, etc.)



Community Partners

Superior Quality Service

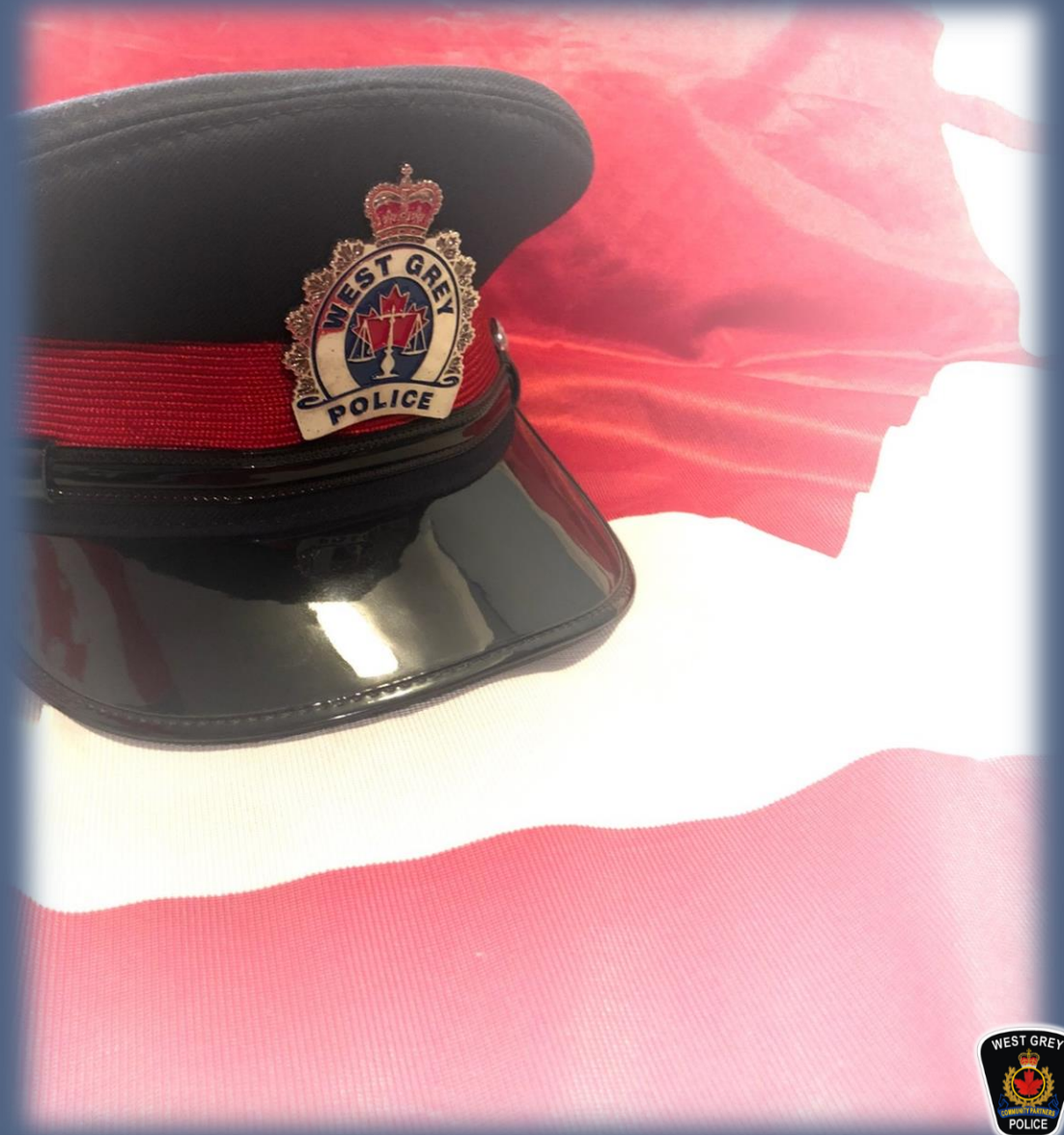


Our Commitment to Our Community

- The *Police Services Act (PSA)* sets out the roles and responsibilities of municipalities with respect to the provision of policing services in Ontario and outlines the adequate and effective services that every police service shall meet.

The West Grey Police Service is compliant in all aspects of Ontario Regulation 3/99 and the Police Services Act including:

- *Crime Prevention*
- *Law Enforcement*
- *Assistance to Victims of Crime*
- *Public Order Maintenance*
- *Emergency Response*
- *Administration and Infrastructure*



Community Partners



Platoon Rotating Shift Schedule



Officers are assigned to one of three patrol zones in the Municipality providing 24/7 coverage and a continuous presence in our community.

Community Partners



Ongoing Annual Training

- First Aid, defibrillator and CPR certification
- Use of Force and De-escalation Tactics
- Firearms (day and night firearms) **twice per year**
- IRD (Immediate Rapid Deployment)
- Conducted Energy Weapon (CEW)
- Judgement Training
- Fitness Testing
- Review all Ministry changes, legal and policy updates



Community Partners



Shared Services Agreement



The sharing of a larger number of police resources is an advantage in meeting the overall goal of having safe communities.

Benefits:

- Allows sharing of resources
- Enhanced flexibility in meeting demands
- Economies of scale by sharing resources (people & equipment)
- Larger number of officers to draw on for major occurrences and emergencies (more effective response and reduced overtime)
- Coordinated policing strategies for multi-jurisdictional issues

Community Partners



Support Services Available Through the Shared Services Agreement

Child Sexual Exploitation
Surveillance (Electronic & Physical)
Sex Offender Registry
GPS Grid & Ground search (Search masters)
Hate Crimes Specialists



High Risk Entry Team
Forensic Identification Services
Canine Unit
Crime Analysis
Breath Technicians
Drug Recognition Evaluators



Technical Electronic Investigative Support
Intelligence
Professional Standards
Shore Based Water Rescue
Marine Unit (boat patrol)



Community Partners



West Grey Police Service works closely with the Ontario Provincial Police

If additional specialized support services were required to respond to or investigate a serious incident that has taken place in West Grey, the O.P.P are required to provide both provincial and specialized services to municipalities as part of their provincial mandate under a Section 7 agreement.

Under this agreement there is no additional cost for these services.



Community Partners



Administrative Support Services

- Staffing & Recruitment
- Training
- Tendering & Purchasing
- Policy Development & Maintenance
- Professional Standards, Ethics & Discipline
- Financial Management
- Digital Evidence Management System



Community Partners



Civilian Support Staff



- Data Entry (reports, e-ticketing)
- Front Office Support
- Court Case Management
- NICHE Coordinator
- Information Technology
- Collision Reporting System Entry (MTO)
- Freedom of Information Inquiries
- Record Checks
- Peer Support Team

Employee Wellness



Employee Wellness

Mental Health First Aid

Employee Assistance Program (EAP)

Critical Incident Stress
Management supports

Peer Support

ASIST (Suicide Intervention)

Road to Mental Readiness (R2MR)

Trained Reintegration Officer

Service Contracted Psychotherapist



Community Partners



Continuous Service Improvement



Continuous Service Improvement

- On going training throughout the calendar year. Training needs based on community needs and data on call types, crime trends, organizational needs with a focus on what is required for West Grey.
- Ongoing procedural and policy reviews to ensure we are current on legislative changes and current case law decisions.
- Membership in the Provincial Police Purchasing group to take advantage of economies of scale.
- Shared resource agreements.
- On going technology improvements to ensure efficiency and cost savings in our operations.



Continuous Service Improvement

Community Satisfaction

- Over 86% of our community respondents to our 2022 Strategic Planning Survey indicated they have a positive view of this police service. Although this is recognized as a positive by our membership, it will be imperative to continue to foster our service's relationships with our community.
- Over 90% of respondents reported professionalism on the part of the officers and over 80% of respondents stated officers showed an apparent concern for them and their issues.



Community Partners



Community Partners

West Grey Police Service

- Accountable to our community and Council.
- Immediate access to specialized services to fulfill our policing obligations
- Deliver a wide range of community programs
- Local policing priorities determined in collaboration with the Police Services Board and community needs.
- Policing for our Municipality by your community Police Service.



Community Partners



West Grey Police Service



Thank You

Community Partners

